

There is an obvious 5 x 5 in the painting. Most people would guess that this is a Polybius Square. But you don't populate it with the usual alphabet. Your alphabet is provided in the wheel. There are **25 letters** in the wheel, and they are read clock-wise, from the inner part of the wheel, to the outer, in this order:

KITQK
 WZIKS
 PIUML
 EIZLB
 PIBKP



You are given some obvious coordinates, in what is disguised as a math problem: 1-1, 3-3, 2-2, 1-2 and 3-4. If you try these, they don't give you anything intelligible. So you know that these letters do not work as they are. There are two objects that give clues as to what you are to do with the letters. One is an **EIGHT KNOT**, and the other is a coin called **PIECES OF EIGHT**.



If you do a -8 Caesar Shift on the 25 letters, you will get the following:

CALIC

ORACK

HAMED

WARDT

HATCH

These are the names of two famous pirates in the Golden Age of Piracy. Again, you can try the coordinates on these letters, but again, they will not work. In the background of the 5 x 5, you can see a picture of a pirate ship. Also, in the first part of the poem, there are some tears in the parchment. The tears extend down to several letters. Those letters are SPSIH. This can be rearranged (anagrammed) to **SHIPS**.



If you do some research, you will find that Calico Jack Rackham was the captain of a ship called the “**KINGSTON**”, and Edward Thatch (sometimes spelled Teach), who was known as Blackbeard, was captain of the “**QUEEN ANNE’S REVENGE**”.

The two chess pieces, a **KING** and a **QUEEN** both hint to, and confirm, that these are the correct answers.

Notice, that together, these two ships’ names total 25 letters. You can fill the 5 x 5 up as follows:

KINGS

TONQU

EENAN

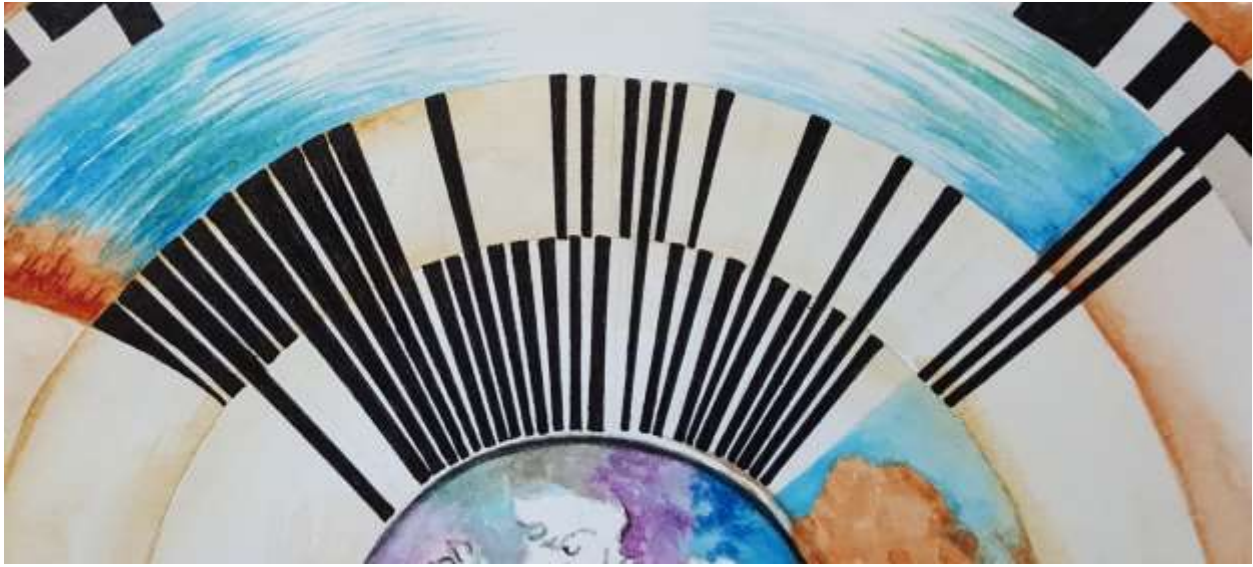
NESRE

VENGE

Now if you apply the 1-1, 3-3, 2-2, 1-2 and 3-4, you will get the letters, **K-N-O-T-S**.

We have already seen our Eight Knot. There is one other knot pictured in the art. It is under the P in the title, “Pirate Treasure”. It can be identified as a **ROYAL KNOT**. Again, the **KING** and **QUEEN (Royalty)** are confirmers that you are on the right track with this. The Royal Knot is also a clue to the final location, as you will see later.

But you are not done with the Polybius Square.



This nice design gives coordinates for the Polybius Square. Each coordinate is symmetrical. So reading from left to right, you have on the top 5, and the bottom 1. Next, you have on the top 5, and on the bottom 5. Third you have on the top 1 and on the bottom 5. In all, you have the following:

5-1, 5-5, 1-5, 2-3, 3-1, 1-2, 1-3, 2-5, 3-3. (3-3 is up a row.) On the Polybius Square, this gives you the word, **SEVENTEEN**.

Together, you have the words, **SEVENTEEN KNOTS**.

But let's not forget about the blood stains on the paper! There are two of them. They fall on the letters **O** and **S**. **Os** on the **PERIODIC TABLE OF ELEMENTS IS OSMIUM**, and its atomic number is **76**. We will keep this in mind for later....



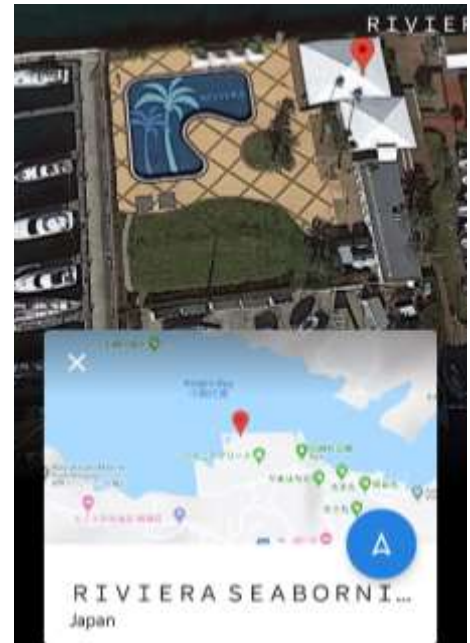
Since this is easy, I will squeeze it in here....The dashes around the coin after the word, "ART" are simply for the number of the letter where it falls in the alphabet. After "ART" there are 15 dashes. That gives us letter O. Next we have 6 dashes for F. Then 8 for H....etc...We finally get, **"ART OF HIDDEN MESSAGES"**.

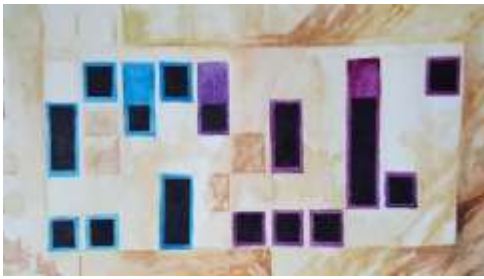
This coin will be used again for the final answer.

Now you may have noticed some strange codes and lettering. Here is one of the easier ones. It is called, “**COMPLEX LEET WRITING**”. You can find this, and many of the other codes on the dcode site. This one says, **RIVIERIA SEABORNIA**. It really just takes some imagination to see the letters in the symbols and numbers. But you can find the Leet Writing on dcode if you want to do a comparison.



Here is where GOOGLE comes in handy for this hunt. If you use **GOOGLE EARTH**, and search “**RIVIERIA SEABORNIA**”, it will take you to one place, and one place only, a hotel in Japan. This can be confirmed by the outline of the **ISLAND** of **JAPAN** in the art. But what is important about Riviera Seabornia, is that it has a swimming pool shaped like the letter **R**.





This is a code called “**DOTSIES**”. The code is in BLACK.

The letters TOBY have blue behind them, and BETESDA have purple behind them.

Dotsies Decoder/Translator

DOTSIES' ALPHABET LETTERS (CLICK TO ADD)

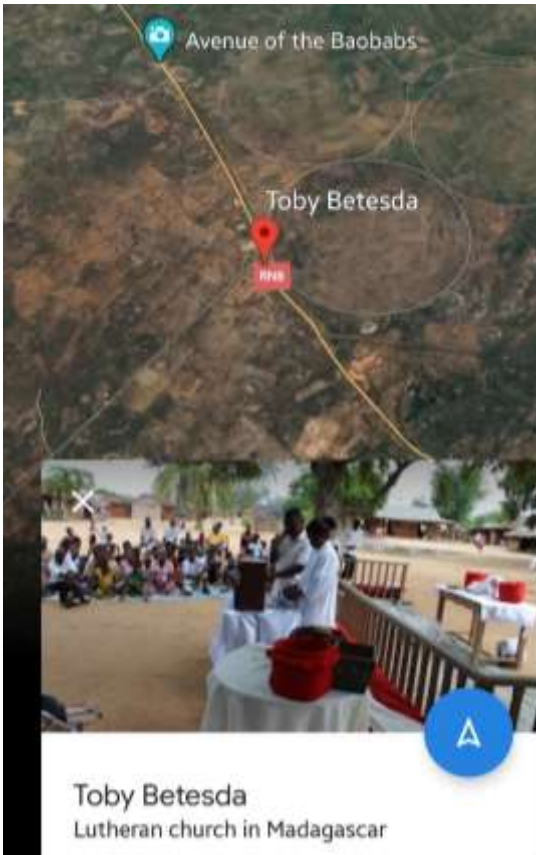


I input the place name of **TOBY BETESDA**, and here is how it is encoded:

Results



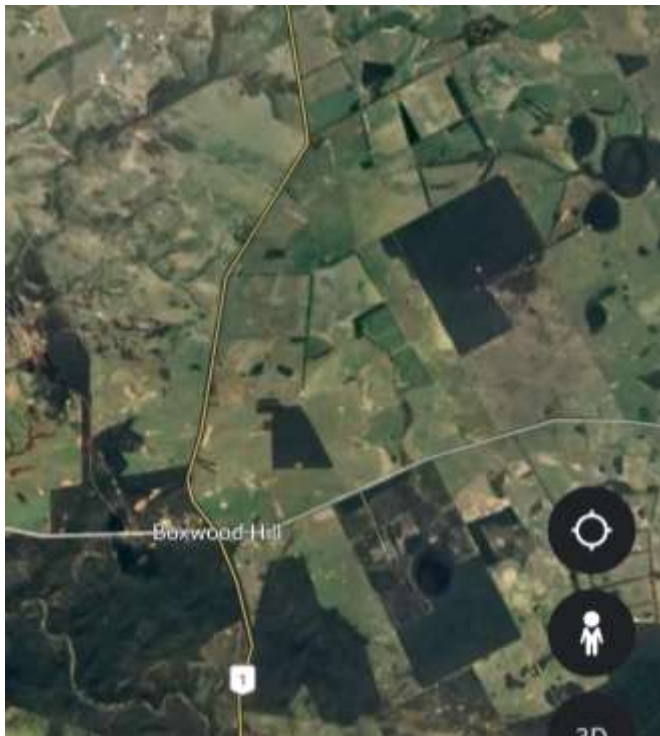
Again, using GOOGLE EARTH, you will find this place, and you will find a feature that looks like a letter. This time the letter is a giant circle, or O. This is in **MADAGASCAR**, another **ISLAND**, which can be seen hidden in the art.



Our next code is a **PRIME NUMBER CIPHER**. This works by taking the first 26 prime numbers and corresponding them with letters of the alphabet. So A = 2, B = 3, C = 5, D = 7,Z = 101.



The numbers give you OXWOODHIL, but the letters that are already on the wheel, add the B at the beginning, and the L at the end for **BOXWOODHILL**. This is in AUSTRALIA. When you do a GOOGLE EARTH search, you will find an area nearby that looks like the letter P.



Our fourth and last location is encoded in **MORSE CODE**. It is the black designs, and they are read from left to right. A dash would be a vertical line. A dot would be a square. So for the first few examples, we have:

DASH-DOT-DOT = D

DOT-DASH-DOT = R

DOT-DASH = A

DOT-DOT-DASH = U

DASH = T

DASH-DASH-DASH = O.....etc...

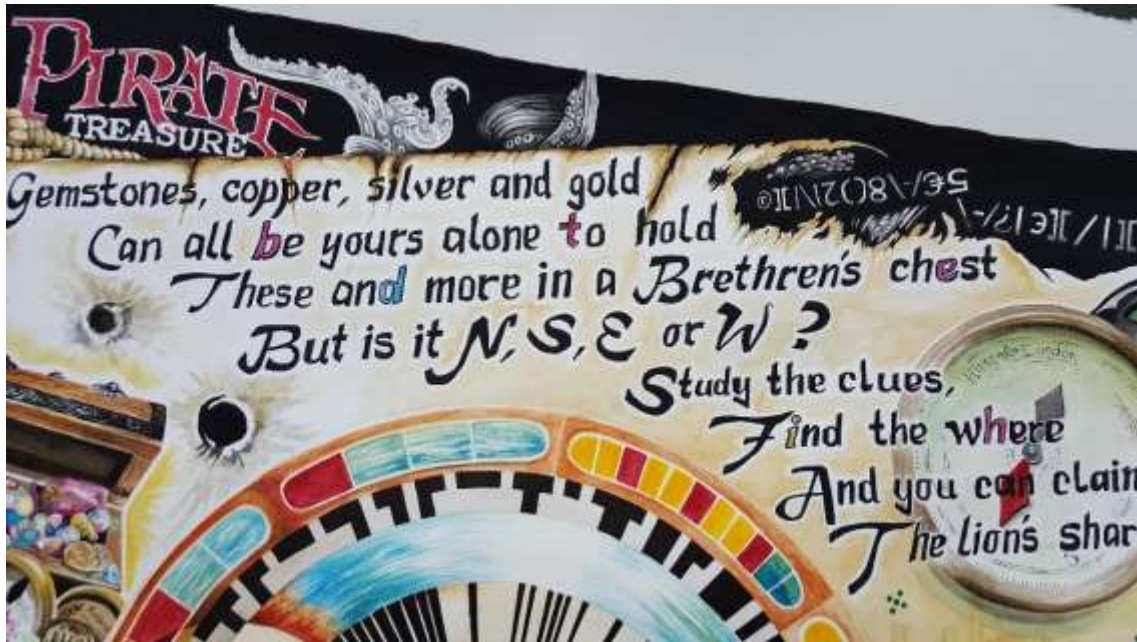


Once all is decoded, we have: **DR AUTO AMPERSAND SALES (DR AUTO & SALES)**

Again, looking on **GOOGLE EARTH**, we find this to be in **PRINCE EDWARD ISLAND** (placed near the king and queen, and upside-down). The letter we find here is an upside-down letter T.



Now that we have all four letters, we can anagram them to spell the word, **PORT**. We should have an idea that what we are looking for is an **ISLAND**, and a **PORT**. (Or, you might have been able to put together the ROYAL knot and PORT for PORT ROYAL, but that is only part of the final answer.)



If we look at the letters in the poem that are highlighted, we see **BTDEIH**. The BTEH are red, and can be anagrammed to spell, "BETH", the artist. But what of the other letters? If you take all of the letters in the order of appearance, BTDEIH, and use a **VIGENERE CIPHER with the KEY WORD, "PORT"**, you will get the plain text word, "**SUNKEN**".

Back to our **PIECES OF EIGHT**....



It has the letters, "**LVGJPZ WA ATIF NWRR**" on the coin. It too is a **VIGENERE CIPHER. The KEY WORD FOR THE CIPHER IS LION**. There are two LIONS on the coin, there is a LION in the center of the art, and the compass points to the word, "LIONS". This will decipher to: "**ANSWER IN PLUS CODE**". Again, here is where Google is your friend. If you don't know what a "Plus Code" is, you can google this to find out that a plus code is a **code for a place that does not have a street address**. It also tells you the format for a plus code. So now you know that your answer has to be in this particular format.

The coin itself looks like it has a plus sign in the center.

This is a big clue to your answer. You now know that the place you are looking for does not have an address.

This is the symbol for a plus code:



Now, if you put all of these clues together, you may or may not have an idea of the place you are looking for. Here are some other clues, that might help, or act as confirmers.



“UHR” is the German word for **“CLOCK”**. I have hidden in the image something very similar to the **“BERLIN CLOCK”**. Here is an excerpt taken from Wikipedia explaining how to read time on the Berlin Clock. And below is a photograph of the clock.



The Mengenlehreuhr consists of 24 lights which are divided into one circular blinking yellow light on top to denote the seconds, two top rows denoting the hours and two bottom rows denoting the minutes.

*The clock is read from the top row to the bottom. The top row of four red fields denote five full hours each, alongside the second row, also of four red fields, which denote one full hour each, displaying the hour value in **24-hour format**. The third row consists of eleven yellow-and-red fields, which denote five full minutes each (the red ones also denoting 15, 30 and 45 minutes past), and the bottom row has another four yellow fields, which mark one full minute each. The round yellow light on top blinks to denote even- (when lit) or odd-numbered (when unlit) seconds.*



My clock shows the time of 11:43.

From Wikipedia:

The 1692 Jamaica earthquake struck [Port Royal, Jamaica](#) on 7 June. A stopped pocket watch found in the harbour in 1951 indicated that it occurred around 11:43 am.

Known as "one of the wickedest places on Earth", it was, at the time, the unofficial capital of Jamaica, one of the busiest and wealthiest ports in the [West Indies](#), and a common home port for many of the privateers and pirates operating within the Caribbean Sea.

The earthquake caused most of the city to sink below sea level.



I am sure most of you are familiar with Henry Morgan, the pirate whose face is famous with the brand of spiced rum. Well he was famous in Port Royal too. But he died there too. He was hung, and buried there. But when that earthquake hit, there was a tsunami, and much of Port Royal sunk into the sea, along with the graveyard, including the body of Henry Morgan. This represents a casque of rum floating out to sea.

Back to our numbers, 17 and 76. They are latitude and longitude numbers. 17° N, 76° W are the first two digits in the latitude and longitude for Jamaica. These alone will put you in the Caribbean Sea, where the nearest land is Jamaica.

You may think that PORT ROYAL, Jamaica, is the answer. Many of our clues brought us there. But that is not the ending point. Recall some of the other clues. Port Royal has an address. The place we are looking for does not have an address. The time on the clock is when the ancient pirate city sank. One of our clue words was SUNKEN. The pictures of water in the art is a clue. If you look at a map of Port Royal, you will see out in the water, is the SUNKEN PIRATE CITY. That SUNKEN PIRATE CITY has a PLUS CODE. It is:

W5Q4+88 = PLUS CODE for the SUNKEN PIRATE CITY in PORT ROYAL, JAMAICA

I asked that the winner also answer some questions to show that they did at least some of the puzzles. I was afraid that someone might get lucky and send in a guess of the Sunken Pirate City, without doing much of the work! The questions were as follows:

- 1.) Name at least two pirates mentioned or used as clues in the puzzle. **There were three pirates: Edward Thatch or Blackbeard, Calico Jack Rackham and Henry Morgan.**
- 2.) Name at least two pirate ships mentioned as clues in the puzzle. **These were the Kingston and the Queen Anne's Revenge.**
- 3.) What was revealed by the islands? **There were four places, one on each island. If you found them on google earth, they each revealed a letter, and those letters spelled, PORT.**

Data D: A to Z: Pirate Treasure Answer Key